

# Amphenol SOCAPEX



Dedicated Solutions  
for Entertainment

[www.socapex.com](http://www.socapex.com)



# How to order a "Socapex" from Socapex

## SOCAPEX 19 pins UL N° E166967(01) Certification

Black coating - ROHS  
Split backshell  
7 pre-mate earth contacts

Female panel mount receptacle



- SL GD EF 419 AR
- SLX GD EF 419 AR

Male plug



- SL D FMD 419 AR
- SLX D FMD 419 AR

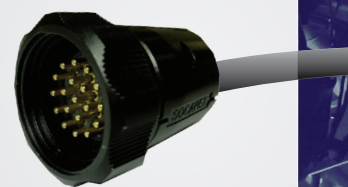
Black coating - ROHS  
Split backshell

Female panel mount receptacle



- SL D EF 419 AR
- SLX D EF 419 AR

Male plug



- SL D FMD 419 AR
- SLX D FMD 419 AR

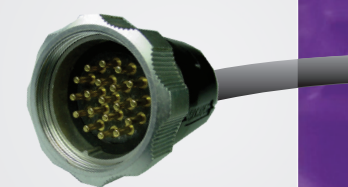
White plating - Non ROHS  
Split backshell  
7 pre-mate earth contacts

Female panel mount receptacle



- SL G EF 419 AR
- SLX G EF 419 AR

Male plug



- SL FMD 419 AR
- SLX FMD 419 AR

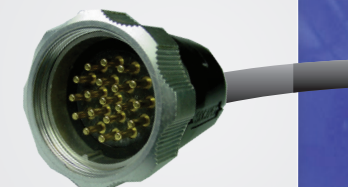
White plating - Non ROHS  
Split backshell

Female panel mount receptacle



- SL EF 419 AR
- SLX EF 419 AR

Male plug



- SL FMD 419 AR
- SLX FMD 419 AR

- Solder version
- Crimp version



# SOCAPEX 19 pins UL N° E166967(01) Certification

Female inline receptacle



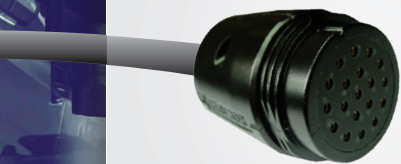
- SL GD FFDR 419 AR
- SLX GD FFDR 419 AR

Male panel mount plug



- SL D EME 419 AR
- SLX D EME 419 AR

Female inline receptacle



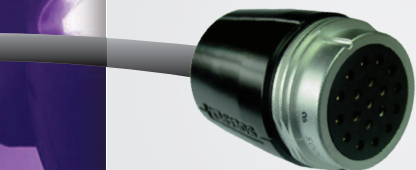
- SL D FFDR 419 AR
- SLX D FFDR 419 AR

Male panel mount plug



- SL D EME 419 AR
- SLX D EME 419 AR

Female inline receptacle



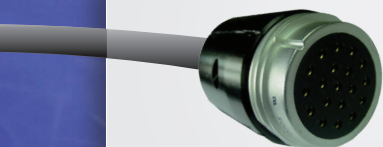
- SL G FFDR 419 AR
- SLX G FFDR 419 AR

Male panel mount plug



- SL EME 419 AR
- SLX EME 419 AR

Female inline receptacle



- SL FFDR 419 AR
- SLX FFDR 419 AR

Male panel mount plug



- SL EME 419 AR
- SLX EME 419 AR

- Solder version
- Crimp version

Choose the best for your stage lighting

# How to order a "Socapex" from Socapex...

## SOCAPEX 19 pins UL N° E166967(01) Certification

### Black coating - ROHS Monopiece backshell PG29

Cable diameter 15 mm  
(0,59 in) to 24 mm (0,94 in)  
Sealed IP 67

#### Female panel mount receptacle



■ SL GD EF 419 AR  
■ SLX GD EF 419 AR

#### Male plug



■ SL D FMD PG29 419 AR  
■ SLX D FMD PG29 419 AR

### Black coating - ROHS Monopiece backshell PG36

Cable diameter 24 mm  
(0,94 in) to 34 mm (1,34 in)  
Sealed IP 67

#### Female panel mount receptacle



■ SL GD EF 419 AR  
■ SLX GD EF 419 AR

#### Male plug



■ SL D FMD PG36 419 AR  
■ SLX D FMD PG36 419 AR

## SOCAPEX 7 pins UL N° E166967(01) Certification

### Black coating - ROHS Split backshell

Only available in solder version

#### Female panel mount receptacle



SL D EF 37 Y

#### Male plug

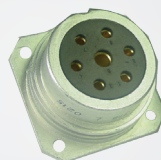


SL D FMD 37 Y

### White plating - Non ROHS Split backshell

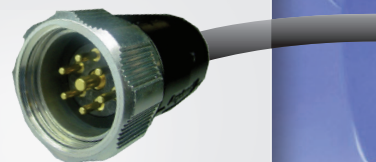
Only available in solder version

#### Female panel mount receptacle



SL D EF 37 Y

#### Male plug



SL FMD 37 Y



## SOCAPEX 19 pins UL N° E166967(01) Certification

Female in line receptacle



- SL GD FFDR PG29 419 AR
- SLX GD FFDR PG29 419 AR

Male panel mount plug



- SL D EME 419 AR
- SLX D EME 419 AR

Female in line receptacle



- SL GD FFDR PG36 419 AR
- SLX GD FFDR PG36 419 AR

Male panel mount plug



- SL D EME 419 AR
- SLX D EME 419 AR

## SOCAPEX 7 pins UL N° E166967(01) Certification

Female in line receptacle



SL D FFDR 37 Y

Male panel mount plug



SL D EME 37 Y



Female in line receptacle



SL FFDR 37 Y

Male panel mount plug



SL EME 37 Y

## Backshell

### Straight or right-angle backshell:

Connector size	Backshell reference	
	Straight	Right-angle
	Black (non-conductive)	
40	47380N	47384N

Connector size	Backshell reference	
	Straight	Right-angle
	Nickel (conductive)	
40	47380NI	47384NI

Connector size	Backshell reference	
	Straight	Right-angle
	Black (non-conductive)	
30	47379N	47383N

Connector size	Backshell reference	
	Straight	Right-angle
	Nickel (conductive)	
30	47379NI	47383NI

- Solder version
- Crimp version



If you want to order your female connectors without earth contacts, remove the letter "G" after "SL" or "SLX"



# Solutions for show control

## THE "SOCA" SL 19 PINS

- ▶ 19 pins configuration (layout 419AR), with high strength-weight ratio for stage lighting
- ▶ UL recognized, RoHS version
- ▶ Supplied with solder or crimp gold plated contacts (up to 25A)
- ▶ Closed entry female contacts & SLG version with 7 first mate last break contacts provide electrical safety
- ▶ Split backshell with efficient cable clamp for simple wiring and maintenance
- ▶ Monopiece backshell with IP67 sealing for outdoor applications

[www.socapex.com](http://www.socapex.com)



## THE "SOCA" SL 7 PINS (LAYOUT 37Y)

- ▶ For Hoist Motor applications
- ▶ UL recognized, RoHS version
- ▶ Layout supplied with high quality gold plated solder contacts and closed entry female contacts for electrical safety
- ▶ Aluminium alloy shell and reinforced locking ring with excellent reliability and robustness
- ▶ Split backshell with efficient cable clamp for simple wiring and maintenance

[www.socapex.com](http://www.socapex.com)



**Hoist Motors**

**Stage Lighting**

## BROADCAST SOLUTIONS

- ▶ 110 connector - fully compliant to SMPTE 304M for HDTV broadcast camera applications. Both intermatable and interchangeable with existing SMPTE 304M compliant connectors
- ▶ FS12A twelve-channel fiber optic connector for high channel count, deployable broadcast applications
- ▶ Hermaphroditic MinTAC dual-channel fiber optic connector for audio, lighting and broadcast applications. Ideal for indoor audio and lighting consoles and systems and outdoor environments

[www.fibersystems.com](http://www.fibersystems.com)



**Dimmers**

## MP SERIES

- ▶ Ideal for audio snake cables, concert touring systems and outside broadcast applications

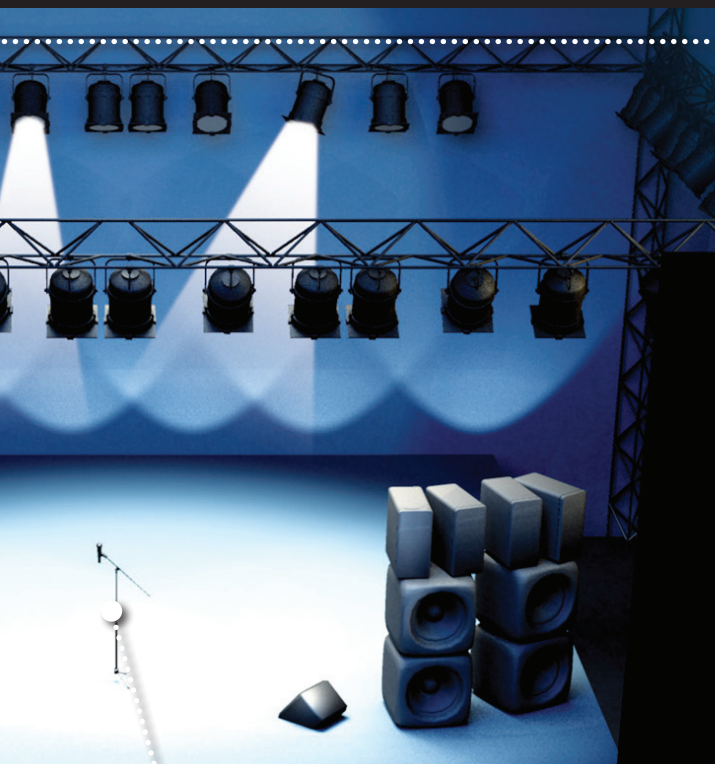
[www.amphenolaudio.com](http://www.amphenolaudio.com)



**Broadcast**

**Audio & Consoles**





## C 146

**Heavy/mate connectors - for Power and high poles**

- ▶ For applications requiring high power or high number of poles
- ▶ Up to 250 A or up to 280 poles

[www.amphenol.de](http://www.amphenol.de)

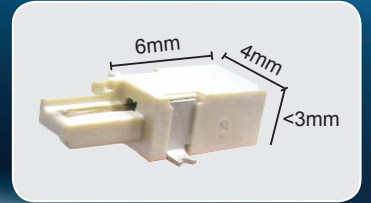


## SSL SERIES

**SSL 1.1 & 1.2**

- ▶ For indoor to outdoor lamps and luminaires
- ▶ Board to board connection

[www.amphenolltw.com](http://www.amphenolltw.com)



## Displays

# Amphenol

## HYBRID CONNECTOR - IP X8 WATERPROOF HYBRID CONNECTORS

- ▶ Designed for lighting control protocols & applications

[www.amphenolltw.com](http://www.amphenolltw.com)

## RUGGED & SEALED ETHERNET CONNECTOR – RJ & USB FIELD

- ▶ For show control applications
- ▶ Allows you to use an Ethernet Class D / Cat5E and class E / Cat6 connection for 10BaseT, 100 BaseTX or 1000 BaseT networks for outdoor applications
- ▶ Use a standard RJ45 cordset in a composite or metallic plug which will protect it from shocks, dust and fluids
- ▶ Robust & sealed (IP67) plastic or metallic shell with quarter turn coupling to secure your network
- ▶ Also available rugged and sealed USB connectors & USB memory sticks

[www.amphenol-socapex.com](http://www.amphenol-socapex.com)



## AC SERIES XLR CONNECTORS

- ▶ For audio signals in professional sound applications such as microphones, amplifiers, speakers and public address systems

[www.amphenolaudio.com](http://www.amphenolaudio.com)



## Solutions for low profile LED lighting luminaire

- ▶ Designed for low profile LED lighting luminaires

[www.amphenolltw.com](http://www.amphenolltw.com)





# Amphenol SOCAPEX

## CONTACT US

Amphenol Socapex  
948 promenade de l'arve, BP29  
74311 THYEZ - FRANCE

 [www.socapex.com](http://www.socapex.com)  
[Contact@amphenol-socapex.com](mailto:Contact@amphenol-socapex.com)

 Sales & Technical support :  
**+33 (0)4 50 89 28 00**



Your local distributor



DOC-000100-ANG

## Amphenol Socapex

We reserve the right to **modify our products** in any way we deem necessary.  
Any duplication is **prohibited**, unless approved in writing.  
Designed by **AMPHENOL SOCAPEX** - August 2017

INDUSTRIAL@AMPHENOL  
TRUSTED GLOBALLY

MONT-BLANC  
★★★★  
EXCELLENCE INDUSTRIES